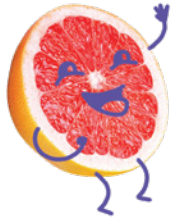




Snack Pals Riddles

Circle the Snack Pal that matches the riddle!

This Snack Pal can be purple or green. They grow on a vine and can have seeds inside, or not, and a smooth skin.



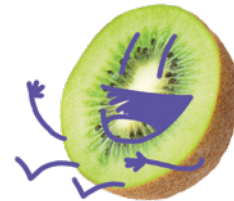
This Snack Pal is small and red. They have tiny seeds studding their skin, and a green stem.



This Snack Pal is long, orange, and grows underground!



This Snack Pal has a big family! They are small, and have wrinkly brown skin.



This Snack Pal grows on a tree in big bunches! They have a peel you shouldn't eat, and change from green to yellow when they are ripe.



Answers: Grapes, Strawberry, Carrot, Raisins, Banana

Join Snack Pals on their app! See hannafordsnackpals.com to download.