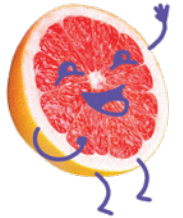




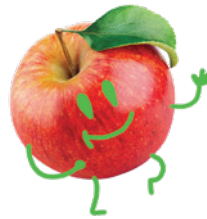
Snack Pals Riddles

Circle the Snack Pal that matches the riddle!

This Snack Pal can be purple or green.
They grow on a vine and can have seeds
inside, or not, and a smooth skin.



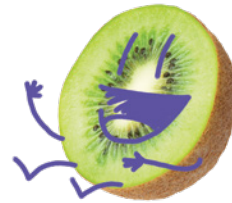
This Snack Pal is small and red.
They have tiny seeds studding
their skin, and a green stem.



This Snack Pal is long, orange,
and grows underground!



This Snack Pal has a big family! They
are small, and have wrinkly brown skin.



This Snack Pal grows on a tree in big
bunches! They have a peel you
shouldn't eat, and change from
green to yellow when they are ripe.



answers: Grapes, Strawberry, Carrot, Raisins, Banana

Join Snack Pals on their app! See hannafordsnackpals.com to download.